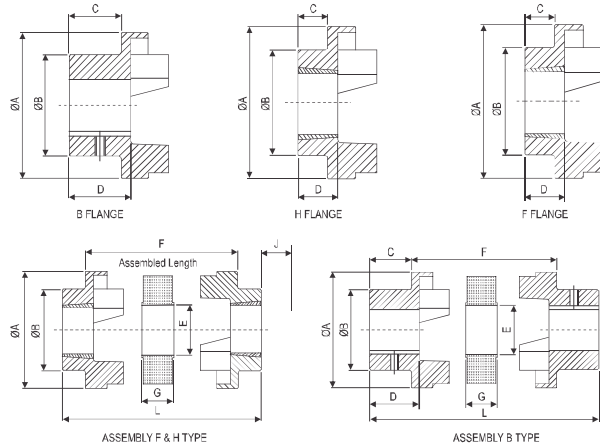




www.utlcoupling.com

UTL UFC COUPLINGS (Jaw Couplings)

UTL FLEXIBLE COUPLINGS



FEATURES

- UFC couplings are essentially general purpose couplings with a flexible spider which can accommodate higher degree of misalignment.
- Parallel misalignment upto 0.5 mm
- Axial misalignment up to 1.7 mm
- The design of the UFC coupling has been optimised so that power capacities are balanced to the appropriate shaft diameters.
- Spider are unaffected by moisture, grease and oils-including non-aromatic and non-ketone solvents & temperatures within the range 40°C to + 100°C virtually eliminated and lubrication free.

DIMENSIONS & TECHNICAL DATA

Size	kW rating at 100 rpm	Type F & H									Type B								Wt in. Kg	Moment of inertial (kg.m ²)	
		TLB Size	Min. Bore	Max. Bore	C	D	F	L	J*	Min. Bore	Max. Bore	C	D	F	L	A	B	E			G
70	0.33	1008	9	25	20.0	24	26.0	66.0	29	10	32	20	24	26.0	66.0	69	60	31	18.0	On request UTL will provide data.	On request UTL will provide data.
90	0.84	1108	9	28	19.5	24	31.5	70.5	29	10	35	26	30	30.5	82.5	85	70	32	22.5		
110	1.68	1210	11	32	18.5	27	46.0	83.0	38	10	55	37	45	45.0	119.0	112	100	45	29.0		
110A	1.68	1610	14	42	18.5	27	46.0	83.0	38	-	-	-	-	-	-	112	100	45	29.0		
130	3.30	1610	14	42	18.0	27	54.0	90.0	38	14	60	47	56	54.0	148.0	130	105	50	36.0		
150	6.28	2012	14	50	23.5	34	61.0	108.0	44	19	70	50	60	60.0	160.0	150	115	62	40.0		
180	9.95	2517	16	60	34.5	47	74.0	143.0	48	35	80	58	70	73.0	189.0	180	125	77	49.0		
230	20.90	3020	25	75	39.5	53	86.5	165.5	55	38	100	77	90	85.5	239.5	225	155	99	59.5		
280	33.00	3525	35	90	51.0	67	106.5	208.5	67	48	115	90	105	104.5	284.5	275	206	119	74.5		

* J - Wrench clearance to allow tightening and loosening the bush on the shaft

MATERIAL SPECIFICATIONS

Hub	70 - 280	Cast Iron	CI	CI IS 210 Gr FG - 200
Spider	80°	Synthetic Rubber	NBR	St. ASTM D 2000BG810

ALTERNATIVE SPIDERS

Execution in Hytrel, Polyurethane available on request.



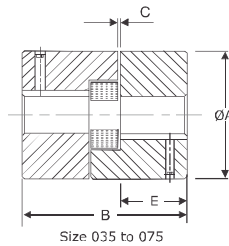
* For temperature range of elastomers please see on page no. 37 - coupling selection



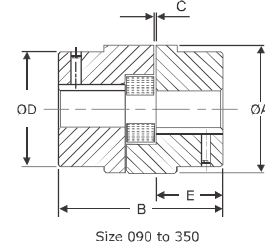
UTL FLEXIBLE COUPLINGS

www.utlcoupling.com

UTL US COUPLINGS
(Spider Elastomer)



Size 035 to 075



Size 090 to 350

FEATURES

- Simple construction, quick and easy installation
- Spider design presets correct distance between hubs, using raised dimple on leg of the spider
- Spiders are unaffected by moisture, grease and oils including non - aromatic and non - ketone solvents
- Temperatures within the range - 40°C to + 100°C
- Range up to 4308 Nm
- Maximum permissible misalignment: angular 1°, parallel 0.4 mm & axial 3 mm (initial alignment must be 25 % of maximum)

DIMENSIONS & TECHNICAL DATA

Size	Rated Torque Nm	kW Rating at			Dimensions are in mm							Torsional Stiffness Nm / rad	Material of hubs	Wt in. Kg SI	Wt in. Kg CI	Wt in. Kg AL	Moment of inertial (kg.m ²)	
		100 rpm	1500 rpm	300 rpm	Min. Bore	Max. Bore	ØA	B	C	ØD	E							
35	0.38	0.004	0.06	0.12	3	10	16	19	1	16	5.5	4	SI	AL	0.02	-	-	3.2.10 ⁻⁷
50	2.50	0.030	0.45	0.90	6	16	28	46	1	28	17	36	SI	AL	-	-	-	7.50.10 ⁻⁶
70	4.90	0.050	0.75	1.50	9	20	35	51	2	36	19	80	SI	AL	0.26	-	0.12	2.91.10 ⁻⁵
75	9.80	0.100	1.50	3.00	9	22	45	55	2	45	21	119	SI/CI	AL	0.44	-	0.19	7.43.10 ⁻⁵
90	21	0.220	3.30	6.60	10	28	54	55	2	54	21	275	CI	AL	-	-	-	1.96.10 ⁻⁴
95	21	0.220	3.30	6.60	10	28	54	63	2	49	25	275	SI/CI	AL	-	-	0.31	2.88.10 ⁻⁴
99	35	0.370	5.55	11.10	10	30	65	72	2	51	27	688	CI	AL	-	-	-	4.92.10 ⁻⁴
100	46	0.490	7.35	14.70	10	35	65	88	2	57	35	688	CI	AL	-	0.75	0.61	7.67.10 ⁻⁴
110	89	0.930	13.95	27.90	15	42	85	108	3	76	43	1719	CI	AL	-	3.20	-	2.77.10 ⁻³
150	141	1.490	22.35	44.70	15	48	96	115	3	80	45	2120	CI	-	-	3.90	-	4.19.10 ⁻³
190	190	2.010	30.15	60.30	20	60	115	133	3	102	54	3495	CI	-	-	7.50	-	0.01200
225	265	2.760	41.40	82.80	20	65	127	153	3	111	64	4584	CI	-	-	10.50	-	0.01800
226	324	3.430	51.45	102.90	25	70	137	178	3	119	70	6990	CI	-	-	13.00	-	0.03000
276	532	5.600	84.00	168.00	25	75	157	200	3	127	80	12720	CI	-	-	19.00	-	0.05300
280	782	8.200	123.00	246.00	30	80	192	200	3	140	80	22517	CI	-	-	25.00	-	0.10200
295	1279	13.400	201.00	-	40	95	237	238	3	162	95	51222	CI	-	-	44.00	-	0.27100
2955	2132	22.400	336.00	-	50	105	237	264	3	180	108	85428	CI	-	-	51.00	-	0.32000
300	3047	31.900	478.50	-	50	105	254	283	3	180	115	126395	CI	-	-	58.00	-	0.41000
350	4308	45.000	675.00	-	50	115	305	309	3	200	128	183633	CI	-	-	86.00	-	0.82100

MATERIAL SPECIFICATIONS

Hub	Size - 050-110	Aluminum	AL	BS 1490 - LM 4
Hub	Size - 035-070	Sintered Iron	SI	DIN - 30910 C 11
Hub	Size - 090-225	Cast Iron	CI	DIN 1693 GG 20
Hub	Size - 226-350	Cast Iron	CI	DIN 1693 GG 25
Spider 80° Shore A	Size - 035-350	Synthetic Rubber	NBR	ASTM D2000 BG 810

• Alternative Spider for higher power ratings is available on request.

Spider 92° Shore A	Size - 035-350	Synthetic Rubber	NBR	ASTM D2000 BG 910	Torque 1.6 times of standard
Spider 80° Shore A	Size - 035-350	Synthetic Rubber	EPDM	ASTM D2000 AA 810	Torque as per standard
Spider 92° Shore A (Yellow Colour)	Size - 035-350	Polyurethane	PU		Torque 1.8 times of standard
Spider 98° Shore A (Red Colour)	Size - 035-350	Polyurethane	PU		Torque 2.5 times of standard
Spider 65° Shore D	Size - 050-095	Hytrel	Hyt		Torque 3.5 times of standard for slow speed

- Max speed not to exceed for CI hubs for surface speed V = 35m / sec
- Max speed not to exceed for Aluminum hubs for surface speed V = 30m / sec
- Max speed not to exceed for SI hubs for surface speed V = 25m / sec



• For temperature range of elastomers please see on page no. 37 - coupling selection

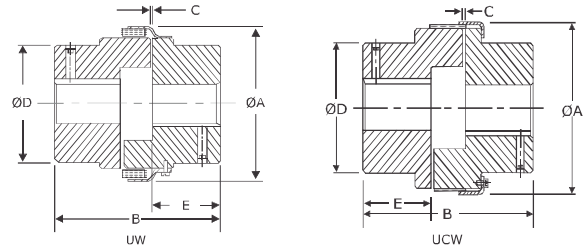




www.utlcoupling.com

UTL UW / UCW COUPLINGS (Snap Wrap / T Cushion Elastomer)

UTL FLEXIBLE COUPLINGS



FEATURES

- Simple construction, quick and easy installation
- Snap-wrap design presets correct distance between hubs, using raised dimple on leg of the snap-wrap
- Snap-wrap are unaffected by moisture, grease and oils including non - aromatic and non - ketone solvents
- Temperatures within the range - 40°C to + 100°C
- Inspection / Replacement of Snap-wrap / T cushion within 5 minutes and only screw drive is required
- Above size 226 T cushion is used as an element
- Range up to 4308 Nm
- Maximum permissible misalignment: angular 1°, parallel 0.4 mm & axial 3 mm (initial alignment must be 25 % of maximum)

DIMENSIONS & TECHNICAL DATA

Size	Rated Torque Nm	kW Rating at			Dimensions are in mm							Torsional Stiffness Nm / rad	Wt in. Kg approx	Moment of inertial (kg.m ²)
		100 rpm	1500 rpm	300 rpm	Min. Bore	Max. Bore	ØA	B	C	ØD	E			
95	21	0.220	3.30	6.60	10	28	64	63	2	49	25	275	0.80	2.98.10 ⁻⁴
99	35	0.370	5.55	11.10	10	30	78	72	2	51	27	688	-	4.92.10 ⁻⁴
100	46	0.490	7.35	14.70	10	35	78	88	2	57	35	688	1.58	7.67.10 ⁻⁴
110	89	0.930	13.95	27.90	15	42	96	108	3	76	43	1719	3.31	2.77.10 ⁻³
150	141	1.490	22.35	44.70	15	48	111	115	3	80	45	2120	4.05	4.19.10 ⁻³
190	190	2.010	30.15	60.30	20	60	130	133	3	102	54	3495	7.70	0.0120
225	265	2.760	41.40	82.80	20	65	142	153	3	111	64	4584	10.70	0.0180
226	324	3.430	51.45	102.90	25	70	153	178	3	119	70	6990	15.00	0.0300
276	532	5.600	84.00	168.00	25	75	173	200	3	127	80	12720	21.000	0.0530
280	782	8.200	123.00	246.00	30	80	205	200	3	140	80	22517	29.00	0.1020
295	1279	13.400	201.00	-	40	95	251	238	3	162	95	51222	48.00	0.2710
2955	2132	22.400	336.00	-	50	105	251	264	3	180	108	85428	59.00	0.3200
300	3047	31.900	478.50	-	50	105	267	283	3	180	115	126395	86.00	0.4100
350	4308	45.000	675.00	-	50	115	318	309	3	200	128	183633	132.00	0.8210

MATERIAL SPECIFICATIONS

Component	Size	Material	Code	Standard
Hub	Size - 095-225	Cast Iron	CI	DIN 1693 GG 20
Hub	Size - 226-350	Cast Iron	CI	DIN 1693 GG 25
Snap-wrap 80° Shore A	All Size	Synthetic Rubber	NBR	ASTM D2000 BG 810
T Cushion 80° Shore A	All Size	Synthetic Rubber	NBR	ASTM D2000 BG 810
Outer ring	Size - 095-350	Mild Steel	CRCA	BS 970

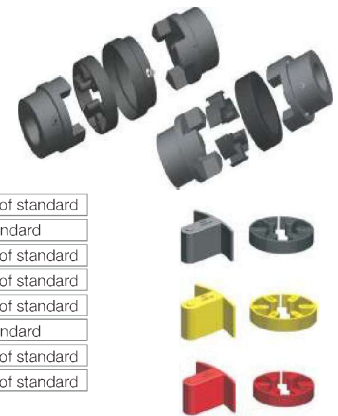
• Alternative Snap-wrap / T cushion for higher power ratings is available on request.

Component	Size	Material	Code	Standard	Torque
Snap-wrap 92° Shore A	All Size	Synthetic Rubber	NBR	ASTM D2000 BG 910	Torque 1.6 times of standard
Snap-wrap 80° Shore A	All Size	Synthetic Rubber	EPDM	ASTM D2000 AA 810	Torque as per standard
Snap-wrap 92° Shore A (Yellow Colour)	All Size	Polyurethane	PU		Torque 1.8 times of standard
Snap-wrap 98° Shore A (Red Colour)	All Size	Polyurethane	PU		Torque 2.5 times of standard
T Cushion 92° Shore A	All Size	Synthetic Rubber	NBR	ASTM D2000 BG 910	Torque 1.6 times of standard
T Cushion 80° Shore A	All Size	Synthetic Rubber	EPDM	ASTM D2000 AA 810	Torque as per standard
T Cushion 92° Shore A (Yellow Colour)	All Size	Polyurethane	PU		Torque 1.8 times of standard
T Cushion 98° Shore A (Red Colour)	All Size	Polyurethane	PU		Torque 2.5 times of standard

• Max speed not to exceed surface speed V = 35m / sec



• For temperature range of elastomers please see on page no. 37 - coupling selection

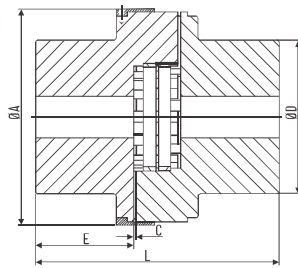
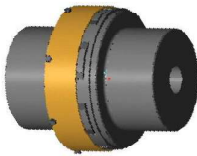




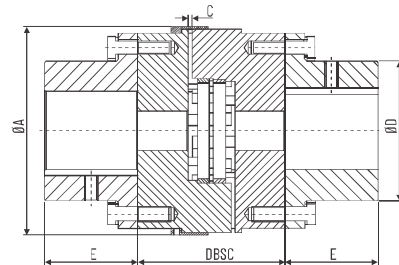
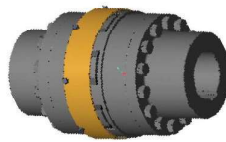
www.utlcoupling.com

UTL UH / UHS COUPLINGS

UTL FLEXIBLE COUPLINGS



FROM SIZE UH 3067 TO SIZE UH 3667



FROM SIZE UHS 3067 TO SIZE UHS 7069

FEATURES

- Individual free-floating load cushions held in place by outside steel collar.
- Easy to assemble & disassemble.
- Cushion easily inspected at all times.

DIMENSIONS & TECHNICAL DATA (UH)

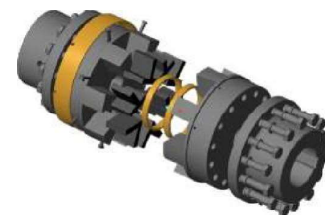
Size	Rated Torque Nm	kW. at 100 rpm	Max. Speed rpm	Min Bore	Max. Bore	ØA	ØD	E	C	L	Wt in. Kg approx. in Pilot Bore	Moment of inertial (kg.m ²)
3067	5307	55.9	2200	60	105	262	180	121	3	295	58	On request UTL will provide data.
3567	7124	74.6	2000	60	115	288	197	127	3	314	73	
3667	9903	104	1800	70	130	313	222	143	3	353	105	



DIMENSIONS & TECHNICAL DATA (UHS)

Size	Rated Torque Nm	kW. at 100 rpm	Max. Speed rpm	DBSE	Bore		Out side Diameter ØA	Length Thru Bore E	Adaptor Diameter ØD	Wt in. Kg approx. in Pilot Bore	Moment of inertial (kg.m ²)
					Min	Max					
3067	3507	55.9	2200	140, 180	45	100	266	80	167	On request UTL will provide data.	On request UTL will provide data. According to spacer length.
3567	7124	74.6	2000		50	107	293	90	183		
3667	9903	104	1800	180, 250	55	125	317	100	209		
4067	14228	149	1700		65	140	349	110	231		
4567	19195	201	1500		70	165	400	120	288		
5069	22822	239	1450		90	175	412	135	296		
6069	33518	351	1300		100	210	461	150	360		
7069	46982	492	1100		250	100	240	524	170		

- All dimensions are in mm
- Rating based on S.F = 1
- Maintain gap C = 3 mm for UHS 3067 to UHS 4567 dn6 mm. for higher size at the time of assembly.



• For temperature range of elastomers please see on page no. 37 - coupling selection

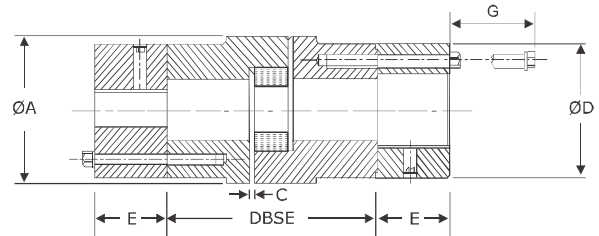


www.utlcoupling.com

UTL FLEXIBLE COUPLINGS



UTL USS COUPLINGS
(Spider Elastomer with Spacer)



FEATURES

- Simple construction, quick and easy installation
- Spider design presets correct distance between hubs, using raised dimple on leg of the Spider
- Without disturbing the pump alignment & piping etc, maintenance is possible. Can also be used where quick disconnection of drive and driven units is required like compressors, generator & blowers etc.
- Range up to 265 Nm
- Maximum permissible misalignment: angular 1°, parallel 0.4 mm & axial 3 mm (initial alignment must be 25 % of maximum)

DIMENSIONS & TECHNICAL DATA

Size	Rated Torque Nm	kW Rating at			Dimensions are in mm								Torsional Stiffness Nm / rad	Wt in. Kg approx.	Moment of inertial (kg.m2)
		100 rpm	1500 rpm	3000 rpm	Min. Bore	Max. Bore	DBSE	ØA	ØD	E	C	G			
095	21.10	0.220	3.30	6.60	10	30	90, 100, 140	54	54	25	2	20	275	2.31	On request UTL will provide data. According to spacer length.
100	46.40	0.490	7.35	14.70	10	38	90, 100, 140	65	65	30	2	20	688	4.38	
110	89	0.930	13.95	27.90	15	42	90, 100, 140, 180	85	76	35	3	21	1719	5.62	
150	141	1.490	22.35	44.70	15	48	90, 100, 140, 180	96	90	40	3	27	2120	7.95	
190	190	2.010	30.15	60.30	20	55	90, 100, 140, 180	115	102	46	3	27	3495	11.57	
225	265	2.760	41.40	82.80	20	65	90, 100, 140, 180	127	115	52	3	21	4584	13.72	

• For non standard DBSE please contact UTL

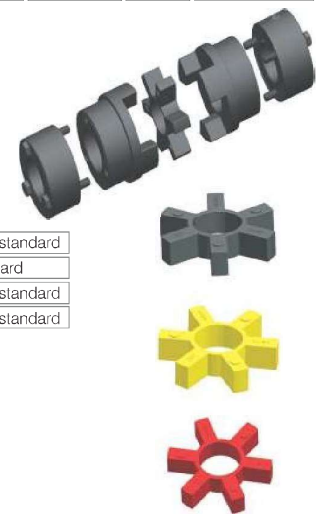
MATERIAL SPECIFICATIONS

Jaw	Size - 095-225	Cast Iron	CI	DIN 1693 GG 20
Acaptor	Size - 095-225	Cast Iron	CI	DIN 1693 GG 20
Spider 80° Shore A	All Size	Synthetic Rubber	NBR	ASTM D2000 BG 810
Hex Bolt	All Size	High Tensile	St	ISO 4014 : Gr 8.8

• Alternative Spider for higher power ratings is available on request.

Spider 92° Shore A	All Size	Synthetic Rubber	NBR	ASTM D2000 BG 910	Torque 1.6 times of standard
Spider 80° Shore A	All Size	Synthetic Rubber	EPDM	ASTM D2000 AA 810	Torque as per standard
Spider 92° Shore A (Yellow Colour)	All Size	Polyurethane	PU		Torque 1.8 times of standard
Spider 98° Shore A (Red Colour)	All Size	Polyurethane	PU		Torque 2.5 times of standard

• Max speed not to exceed surface speed V = 35m / sec



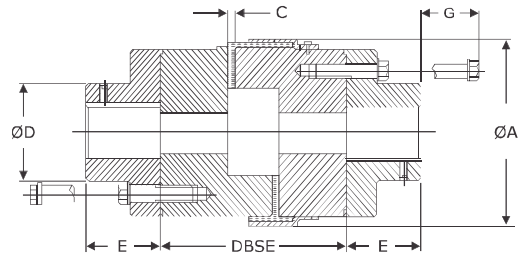
• For temperature range of elastomers please see on page no. 37 - coupling selection



UTL FLEXIBLE COUPLINGS

www.utlcoupling.com

UTL UCWS COUPLINGS
(T Cushion with Spacer)



FEATURES

- Simple construction, quick and easy installation
- T Cushion design presets correct distance between hubs, using raised dimple on leg of the T Cushion
- Without disturbing the pump alignment & piping etc, maintenance is possible. Can also be used where quick disconnection of drive and driven units is required like compressors, generator & blowers etc.
- Range up to 4308 Nm
- Maximum permissible misalignment: angular 1°, parallel 0.4 mm & axial 3 mm (initial alignment must be 25 % of maximum)

DIMENSIONS & TECHNICAL DATA

Size	Rated Torque Nm	kW Rating at			Dimensions are in mm								Torsional Stiffness Nm / rad	Wt. in. Kg approx.	Moment of Inertial (kg.m ²)
		100 rpm	1500 rpm	3000 rpm	Min. Bore	Max. Bore	DBSE	ØA	ØD	E	C	G			
226	324	3.430	51.45	102.90	25	70	135, 140, 180, 250	141.5	134	50	3	40	6990	20.81	On request UTL will provide data. According to spacer length.
276	532	5.600	84.00	168.00	25	75	135, 140, 180, 250	161.5	135	60	3	40	12720	22.50	
280	782	8.200	123.00	246.00	30	75	135, 140, 180, 250	196.5	135	60	3	-	22517	35.00	
295	1279	13.400	201.00	-	40	95	135, 140, 180, 250	243.0	160	65	3	-	51222	57.60	
2955	2132	22.400	336.00	-	50	100	135, 140, 180, 250	243.0	160	65	3	-	85428	-	
300	3047	31.900	478.50	-	50	110	135, 140, 180, 250	265.0	180	80	3	-	126395	81.00	
350	4308	45.00	675.00	-	50	115	135, 140, 180, 250	318.0	205	90	3	-	183633	101.00	

* For non standard DBSE please contact UTL

MATERIAL SPECIFICATIONS

Jaw	Size - 226-350	Cast Iron	CI	DIN 1693 GG 20
Adaptor	Size - 226-350	Cast Iron	CI	DIN 1693 GG 25
T Cushion 80° Shore A	All Size	Synthetic Rubber	NBR	ASTM D2000 BG 810
Hex Bolt	All Size	High Tensile	St	ISO 4014 : Gr 8.8
Outer ring	Size - 226-350	Mild. Steel	CRCA	BS 970

* Alternative T Cushion for higher power ratings is available on request

T Cushion 92° Shore A	All Size	Synthetic Rubber	NBR	ASTM D2000 BG 910	Torque 1.6 times of standard
T Cushion 80° Shore A	All Size	Synthetic Rubber	EPDM	ASTM D2000 AA 810	Torque as per standard
T Cushion 92° Shore A (Yellow Colour)	All Size	Polyurethane	PU		Torque 1.8 times of standard
T Cushion 98° Shore A (Red Colour)	All Size	Polyurethane	PU		Torque 2.5 times of standard

* Max speed not to exceed surface speed V = 35m / sec



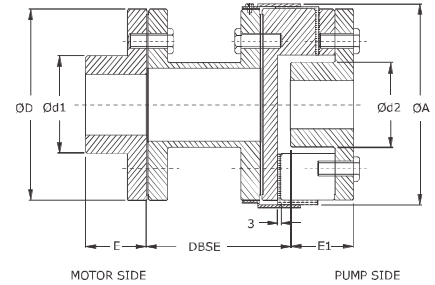
* For temperature range of elastomers please see on page no. 37 - coupling selection



www.utlcoupling.com

UTL USWS COUPLINGS (T Cushio with Spacer)

UTL FLEXIBLE COUPLINGS



FEATURES

- Rigid construction yet flexible
- Design made for ease in maintenance yet accommodating shaft constraints
- No down time or lost production
- No metal to metal contact
- Lubrication free
- Long life
- Maximum permissible misalignment: angular 1°, parallel 0.4 mm & axial 3 mm (initial alignment must be 25 % of maximum)

DIMENSIONS & TECHNICAL DATA

Size	Power Rating at				Dimensions are in mm								Wt.in. Kg approx.	Moment of inertial (kg.m ²)			
	Synthetic Rubber		Polyurethane		Motor side bore		Pump side bore		DBSE	ØA	ØD	Ød1			Ød2	E	E1
	Rated Torque Nm	kW @ 100 rpm	Rated Torque Nm	kW @ 100 rpm	Min. Bore	Max. Bore	Min. Bore	Max. Bore									
276	534	5.6	802	8.4	25	75	24	42	140, 180	173	154	130	70	60	60	On request UTL will provide data.	On request UTL will provide data. According to spacer length.
280	783	8.2	1175	12.3	30	80	28	55		208	189	130	90	65	60		
295	1280	13.4	1920	20.1	30	95	28	65		253	234	160	106	80	70		
2955	2139	22.4	3209	33.6	30	105	28	70		253	234	160	106	80	75		
300	3046	31.9	4570	47.9	30	105	28	75		272	251	180	122	88	80		
350	4298	45.0	6446	67.5	30	115	30	80		323	302	200	130	90	90		

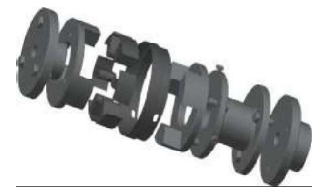
MATERIAL SPECIFICATIONS

Spacer	Size - 276-350	SG Iron	SG	DIN 1693 GG 20
Hub	Size - 276-350	Cast Iron	CI	DIN 1693 GG 25
Acaptor	Size - 276-350	Cast Iron	CI	DIN 1693 GG 25
T Cushion 80° Shore A	All Size	Synthetic Rubber	NBR	ASTM D2000 BG 810
Outer ring	Size - 276-350	Mild. Steel	CRCA	BS 970
Hex Bolt	Size - 276-350	High Tensile	St	ISO 4014 : Gr 8.8

• Alternative T Cushion for higher power ratings is available on request.

T Cushion 92° Shore A	All Size	Synthetic Rubber	NBR	ASTM D2000 BG 910	Torque 1.6 times of standard
T Cushion 80° Shore A	All Size	Synthetic Rubber	EPDM	ASTM D2000 AA 810	Torque as per standard
T Cushion 92° Shore A (Yellow Colour)	All Size	Polyurethane	PU		Torque 1.8 times of standard
T Cushion 98° Shore A (Red Colour)	All Size	Polyurethane	PU		Torque 2.5 times of standard

• Max speed not to exceed surface speed $V = 35m / sec$



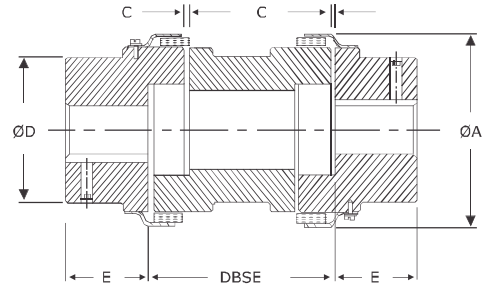
• For temperature range of elastomers please see on page no. 37 - coupling selection



www.utlcoupling.com

UTL UWS COUPLINGS (Two Snap wrap Elastomers with Spacer)

UTL FLEXIBLE COUPLINGS



FEATURES

- Specially designed for machines requiring space for maintenance
- Snap wrap design present correct distance between hubs, using raised dimple on leg of the snap wrap
- Snap wrap are unaffected by moisture, grease and oils including ono-aromatic and non-ketone solvents
- Temperatures within the range - 40°C to + 100°C
- Inspection / Replacement of snap wrap within 5 minutes and only screw driver is required
- Having 2 snap-wrap elastomers means double flexibility
- Floating light weight aluminium spacer
- Range up to 327 Nm
- Maximum permissible misalignment: angular 1°, parallel 0.4 mm & axial 3 mm (initial alignment must be 25 % of maximum)

DIMENSIONS & TECHNICAL DATA

Size	Rated Torque Nm	kW Rating at			Dimensions are in mm						Torsioal Stiffness Nm / rad	Wt in. Kg approx.	Moment of inertial kg.m ²	
		100 rpm	1500 rpm	3000 rpm	Min. Bore	Max. Bore	DBSE	ØA	ØD	E				C
95	21.1	0.22	3.3	6.6	10	28	90, 100, 135, 140, 180	64	49	25	2	275	1.10	On request UTL will provide data according to spacer length.
100	46.4	0.49	7.35	14.7	10	35		78	57	35	2	688	1.13	
110	89	0.93	13.95	27.9	15	42		96	76	43	3	1719	3.93	
150	141	1.49	22.35	44.7	15	48		111	80	45	3	2120	4.97	
190	190	2.01	30.15	60.3	20	60		130	102	54	3	3495	9.00	
225	265	2.76	41.4	82.8	20	65		142	111	64	3	4584	12.20	
226	327	3.43	51.45	102.9	25	70		153	115	70	3	6990	15.60	

• For non standard DBSE please contact UTL

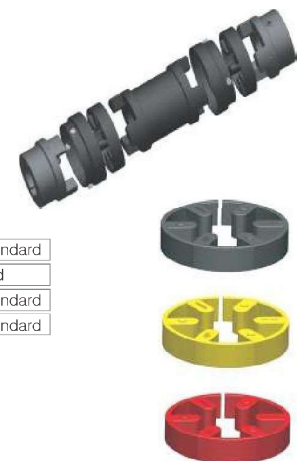
MATERIAL SPECIFICATIONS

Spacer	Size - 095-226	Aluminium	AL	BS 1490 - LM 4
Hub	Size - 095-225	Cast Iron	CI	DIN 1693 GG 20
Hub	Size - 226	Cast Iron	CI	DIN 1693 GG 25
Snap wrap 80° Shore A	All Size	Synthetic Rubber	NBR	ASTM D2000 BG 810
Outer ring	Size - 095-226	Mild. Steel	CRCA	BS 970

• Alternative T Cushion for higher power ratings is available on request.

Snap wrap 92° Shore A	All Size	Synthetic Rubber	NBR	ASTM D2000 BG 910	Torque 1.6 times of standard
Snap wrap 80° Shore A	All Size	Synthetic Rubber	EPDM	ASTM D2000 AA 810	Torque as per standard
Snap wrap 92° Shore A (Yellow Colour)	All Size	Polyurethane	PU		Torque 1.8 times of standard
Snap wrap 98° Shore A (Red Colour)	All Size	Polyurethane	PU		Torque 2.5 times of standard

• Max speed not to exceed 3300 rpm



• For temperature range of elastomers please see on page no. 37 - coupling selection



www.utlcoupling.com

UTL USF / UWF COUPLINGS (Spider / Snap Wrap / T Cushions Elastomer)

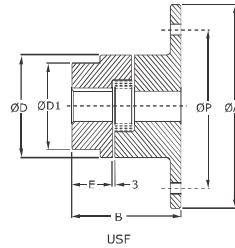
UTL FLEXIBLE COUPLINGS



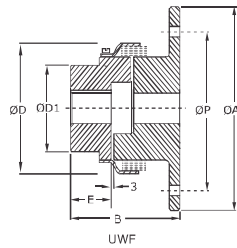
USF



UWF



USF



UWF

FEATURES

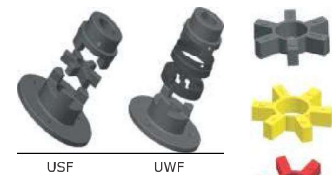
- Specially designed for engine applications.
- Easy to assemble & disassemble.
- Elimination of extension shaft reduces cost of equipment.
- Coupling mounted directly on engine flywheel.
- For USF spider is used as an element (size 150 to 2955)
- For UWF snap wrap is used as an element (size 150 to 225) & T cushions are used as elements (size 226 to 2955)
- Maximum permissible misalignment: angular 1°, parallel 0.4 mm & axial 3 mm (initial alignment must be 25 % of maximum)

DIMENSIONS & TECHNICAL DATA

Size	Rated Torque Nm	kW Rating at 100 rpm	Max. Speed rpm	SAE size Inches	Flange dimensions in mm				Hub dimensions in mm					Wt in. Kg USF	Wt in. Kg UWF	Moment of Inertial kg.m ²	
					ØA	ØP	No. of holes	Hole Dia	ØD UWF / USF	ØD1	E	Min. Bore	Max. Bore				B
150	141	1.49	3400	5.5	190.0	137.0	3	12	111 / 96	80	45	15	48	122	On request UTL will provide data.	On request UTL will provide data.	On request UTL will provide data.
190	190	2.01	1900	11.5	352.4	333.4	8	10.3	130 / 115	102	54	20	60	107			
225	265	2.76	1900	11.5	352.4	333.4	8	10.3	142 / 127	111	64	20	65	117			
226	324	3.43	3000	6.5	216.0	200.0	6	8.5	153 / 137	115	70	22	70	136			
			2700	8.0	263.5	244.5	6	10.3									
			2100	10.0	314.3	295.3	8	10.3									
			1900	11.5	352.4	333.4	8	10.3									
			1500	14.0	466.7	438.3	8	13.5									
276	532	5.60	2700	8.0	263.5	244.5	6	10.3	173 / 157	127	80	22	75	148			
			1900	11.5	352.4	333.4	8	10.3									
			1500	14.0	466.7	438.2	8	13.5									
280	782	8.20	2100	10.0	314.3	295.3	8	10.3	205 / 192	140	80	30	80	148			
			1900	11.5	352.4	333.4	8	10.3									
			1500	14.0	466.7	438.2	8	13.5									
295	1279	13.40	1900	11.5	352.4	333.4	8	10.3	251 / 237	160	95	40	95	171			
			1500	14.0	466.7	438.2	8	13.5									
			1900	11.5	352.4	333.4	8	10.3									
2955	2132	22.40	1900	11.5	352.4	333.4	8	10.3	251 / 237	180	108	50	115	184			
			1500	14.0	466.7	438.2	8	13.5									

MATERIAL SPECIFICATIONS

Hub	Size - 150-225	Cast Iron	CI	DIN 1693 GG 20
Hub	Size - 226-2955	Cast Iron	CI	DIN 1693 GG 25
Flange	Size - 150-225	Cast Iron	CI	DIN 1693 GG 20
Flange	Size - 226-2955	Cast Iron	CI	DIN 1693 GG 25
Spider 80° Shore A	All Size	Synthetic Rubber	NBR	ASTM D2000 BG 810
Outer ring	Size - 150-2955	Mild. Steel	CRCA	BS 970



USF

UWF

• Alternative Spider / Snap wrap / T Cushion for higher power ratings is available on request.

Snap wrap 92° Shore A	All Size	Synthetic Rubber	NBR	ASTM D2000 BG 910	Torque 1.6 times of standard
Snap wrap 80° Shore A	All Size	Synthetic Rubber	EPDM	ASTM D2000 AA 810	Torque as per standard
Snap wrap 92° Shore A (Yellow Colour)	All Size	Polyurethane	PU		Torque 1.8 times of standard
Snap wrap 98° Shore A (Red Colour)	All Size	Polyurethane	PU		Torque 2.5 times of standard
T Cushion 80° Shore A	All Size	Synthetic Rubber	NBR	ASTM D2000 BG 810	Torque as per standard
T Cushion 92° Shore A	All Size	Synthetic Rubber	NBR	ASTM D2000 BG 910	Torque 1.6 times of standard
T Cushion 80° Shore A	All Size	Synthetic Rubber	EPDM	ASTM D2000 AA 810	Torque as per standard
T Cushion 92° Shore A (Yellow Colour)	All Size	Polyurethane	PU		Torque 1.8 times of standard
T Cushion 98° Shore A (Red Colour)	All Size	Polyurethane	PU		Torque 2.5 times of standard
Spider 92° Shore A	All Size	Synthetic Rubber	NBR	ASTM D2000 BG 910	Torque 1.6 times of standard
Spider 80° Shore A	All Size	Synthetic Rubber	EPDM	ASTM D2000 AA 810	Torque as per standard
Spider 92° Shore A (Yellow Colour)	All Size	Polyurethane	PU		Torque 1.8 times of standard
Spider 98° Shore A (Red Colour)	All Size	Polyurethane	PU		Torque 2.5 times of standard

• For temperature range of elastomers please see on page no. 37 - coupling selection